

DEFENSIVE DRIVING COURSE



Proudly supported by:



TYRES WORTH OWNING



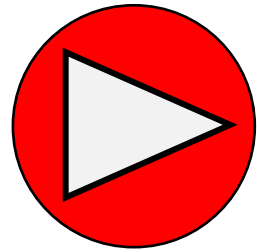
-  (+617) 3299 7723
-  www.sdt.com.au
-  info@sdt.com.au

ARMIDALE/TAMWORTH





ALL THEORY IS VIA E-LEARNING VIDEOS THERE IS NO BORING CLASSROOM TRAINING



CLICK TO VIEW PROMOTIONAL VIDEO

The eLearning videos provide training not covered in the "learn to get a licence" process:

- ✓ WHAT TYPE OF DRIVER ARE YOU?
- ✓ HOW CRASHES REALLY HAPPEN
- ✓ WHAT IS DEFENSIVE DRIVING
- ✓ THE POWER TO ACT (PREDICT RISK & PREVENT DANGER)
- ✓ HOW FAST ARE YOU REALLY GOING?
- ✓ BRAKING: CAN YOU STOP IN TIME?
- ✓ BRAKING: CAN YOU STOP YOURSELF?
- ✓ VEHICLE DYNAMICS (THE PHYSICS OF DRIVING)
- ✓ SAFE FOLLOWING DISTANCES
- ✓ SEATING AND STEERING TECHNIQUES
- ✓ DRIVING VISION/SCANNING
- ✓ TYRE SAFETY (pressures, tread, signs of problems, tyre age)
- ✓ CHANGING GEARS (in MANUAL and AUTO transmissions)
- ✓ HOW TO PERFORM ENGINE CHECKS

- ✓ VEHICLE BREAKDOWNS (solving the common issues)
- ✓ VEHICLE LOADING (storing and transporting cargo)
- ✓ VEHICLE SECURITY & CARJACKING AWARENESS
- ✓ CITY DRIVING (roundabouts, merging, keeping left, traffic lights, motorways, turning right across busy intersections)
- ✓ COUNTRY ROAD TIPS
- ✓ SHARING THE ROAD (trucks, bus, cyclists, motorcyclists)
- ✓ DRIVER IMPAIRMENTS (distractions, fatigue, drugs)
- ✓ VISIBILITY (SEE AND BE SEEN)
- ✓ ECO (FUEL EFFICIENT) DRIVING

Each module has a comprehensive video and then quiz questions to verify your understanding.
A certificate is generated when all videos are viewed with 100% score on the verification questions.
Certain modules **must be completed** prior to attending the practical driver training session.

- ✓ \$20 MILLION PL INSURANCE
- ✓ INSTRUCTORS HAVE FIRST AID + CPR QUALIFICATIONS
- ✓ ALL STAFF ARE EXPERIENCED DRIVER TRAINERS WITH BLUE CARDS FOR YOUTH EMPLOYMENT
- ✓ FIRST AID KITS AND FIRE EXTINGUISHERS ON-SITE
- ✓ VEHICLES INSURED FOR DRIVER TRAINING
- ✓ VEHICLES UNDERGO DAILY SAFETY INSPECTIONS
- ✓ VEHICLES HAVE DASHCAMS FILMING ALL ACTIVITIES
- ✓ RISK ASSESSMENT AVAILABLE TO SCHOOLS
- ✓ COURSES OPERATE TO A PROCEDURES MANUAL





IN-CAR PRACTICAL TRAINING TRAINING VEHICLES ARE SUPPLIED

**JUNIOR DRIVER
TRAINING**
SAFETY STARTS EARLY



The PRACTICAL session involves hands-on training that compliments the eLearning videos.

- ✓ Wet road emergency braking
- ✓ A.B.S. braking training
- ✓ Improved steering to maximise control
- ✓ Cornering skills
- ✓ Improving vision and scanning
- ✓ Evasive steering to avoid a child or vehicle
- ✓ Brake and stay straight for an animal
- ✓ Emergency braking in a curve
- ✓ Speed awareness and braking distances
- ✓ How the vehicle safety systems work
- ✓ Alcohol/drug impairment goggles

Unique things we offer

- 28 years of experience, thousands of school groups and 100,000+ course participants
 - A range of vehicles are supplied so the novice driver gets to experience the difference between large and small vehicles as well as front and rear wheel drive. By not using their own vehicle the participant gains confidence and understanding of the characteristics and limits of different vehicles. Most of our training vehicles are automatic.
- [< CLICK HERE FOR MORE INFORMATION ON THE VEHICLES WE SUPPLY >](#)
- Foam objects (children and kangaroos) are used to simulate impacts for crash avoidance training
 - SDT is the exclusive distributor for Fatal Vision Alcohol/Drug simulation goggles as used on the day
 - Participants receive a certificate and a safety pack with a tyre gauge and 5 x metal valve caps
 - Our certificate should be added to a job application and resume to show potential employers

Minimum requirements to attend

- A provisional licence (*a group can enrol up to 3 Learner drivers and we can supply a dual controlled car*)
- The practical training cannot be attended unless the prerequisite online modules are completed



SCHOOL OR GROUP PRICING

VENUE: Oakburn Park Raceway (Tamworth)

HALF DAY MORNING SESSION:

PARTICIPANTS	DURATION*	VEHICLES	INSTRUCTORS	PRICE	AMOUNT DUE
18	8:30am – 12:30pm	4	3	\$385 pp	\$6930
24	8:30am – 12:30pm	5	4	\$374 pp	\$8976

*Half day format is only available from 8:30am – 12:30pm

2 x HALF DAY FORMAT: 2 sessions across same day

PARTICIPANTS	DURATION*	VEHICLES	INSTRUCTORS	PRICE	AMOUNT DUE
20 (2 x 10)	2 x 4 hours	3	2	\$370 pp	\$7400
28 (2 x 14)	2 x 4 hours	4	3	\$364 pp	\$10192
40 (2 x 20)	2 x 4 hours	5	4	\$335 pp	\$13400
44 (2 x 22)	2 x 4 hours	5	4	\$320 pp	\$14080

*Group A attends from 8:15am – 12:15pm and Group B attends from 12:30pm – 4:30pm on the same day

- The **AMOUNT DUE** is the total price for the group size shown. The price per person shown is based on a full group size, if less participants attend the price per person will increase. The fixed costs of venue hire, supply of vehicles and instructors do not change with less participants attending.
- No refund for non-attendance by a participant (rebooking available if doctors certificate provided)
- All prices include GST, schools could claim a GST refund as a school excursion
- These prices include access to the Safe Driving eLearning modules for each participant

INDIVIDUAL PRICING

\$66 for the eLearning online theory only
 If joining an “open” public course date then fees are:

- \$297 @ Willowbank Raceway (near Ipswich)
- \$363 @ Lakeside Driver Training Centre
- \$330 @ Carnell Raceway (near Stanthorpe)
- \$385 @ Armidale Traffic Education Centre
- \$396 @ Regional venues across QLD and NSW

4hr practical course with eLearning + vehicles supplied





VENUE: Armidale Traffic Education Centre

HALF DAY MORNING SESSION:

PARTICIPANTS	DURATION*	VEHICLES	INSTRUCTORS	PRICE	AMOUNT DUE
12	8:30am – 12:30pm	3	2	\$352 pp	\$4224
18	8:30am – 12:30pm	4	3	\$345 pp	\$6210
24	8:30am – 12:30pm	5	4	\$345 pp	\$8280

*Half day format is only available from 8:30am – 12:30pm

2 x HALF DAY FORMAT: 2 sessions across same day

PARTICIPANTS	DURATION*	VEHICLES	INSTRUCTORS	PRICE	AMOUNT DUE
20 (2 x 10)	2 x 4 hours	3	2	\$335 pp	\$6700
28 (2 x 14)	2 x 4 hours	4	3	\$330 pp	\$9240
40 (2 x 20)	2 x 4 hours	5	4	\$315 pp	\$12600
44 (2 x 22)	2 x 4 hours	5	4	\$297 pp	\$13068

*Group A attends from 8:15am – 12:15pm and Group B attends from 12:30pm – 4:30pm on the same day

2 x HALF DAY FORMAT: afternoon session then morning session over 2 consecutive days

PARTICIPANTS	DURATION*	VEHICLES	INSTRUCTORS	PRICE	AMOUNT DUE
18 (2 x 9)	2 x 4 hours	3	2	\$352 pp	\$6336
24 (2 x 12)	2 x 4 hours	3	2	\$297 pp	\$7128
28 (2 x 14)	2 x 4 hours	4	3	\$330 pp	\$9240
32 (2 x 16)	2 x 4 hours	4	3	\$308 pp	\$9856

*Group A attends from 1:00pm – 5:00pm and Group B attends from 8:30am – 12:30pm on the next day



(+617) 3299 7723



www.sdt.com.au

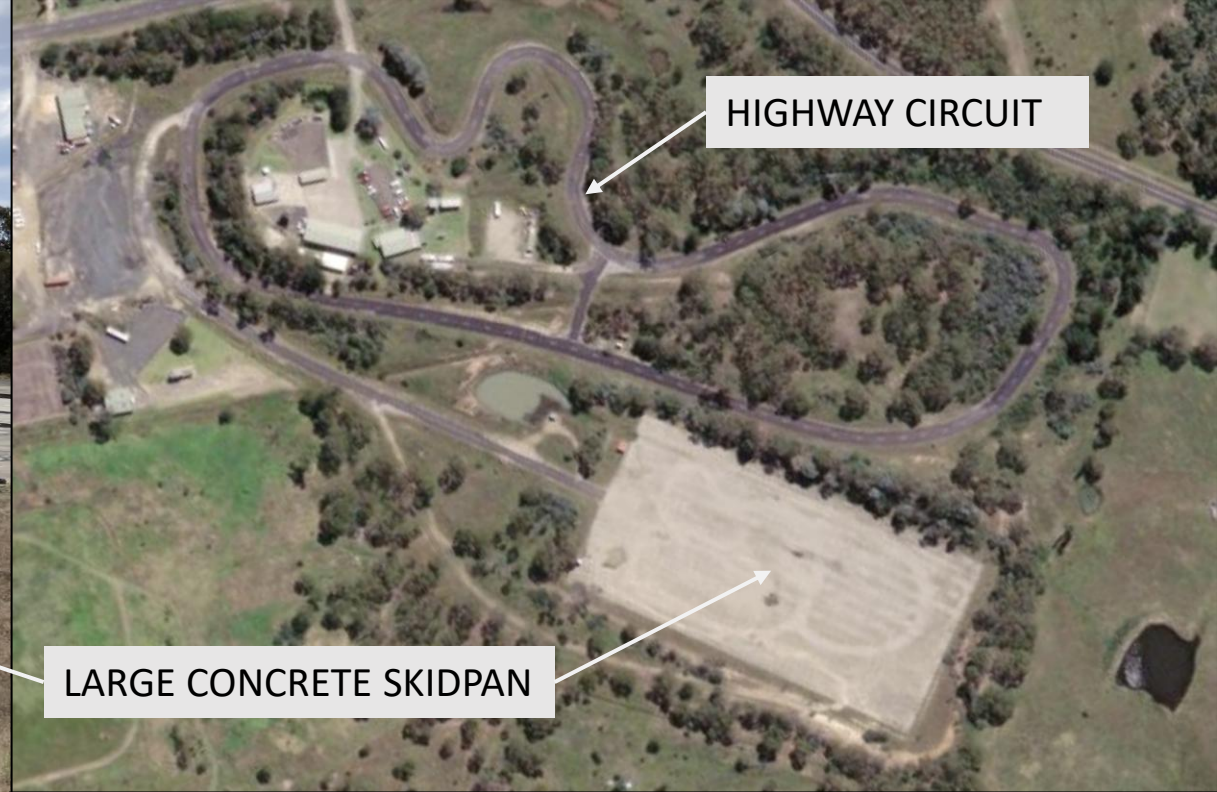


info@sdt.com.au



CLICK TO VIEW OUR COMPANY PROFILE VIDEO





ARMIDALE VENUE INFORMATION:

- The Armidale Traffic Education Centre includes a huge concrete skidpan with watering system plus a highway driving circuit with curves for steering and vision skills
- The large skidpan allows multiple training activities to occur simultaneously
- The venue is located very close to town (a short walk)
- The venue has strict noise limits
- There are bathroom facilities
- There is a classroom and kitchen





TAMWORTH VENUE INFO:

- The Oakburn Park facility has a driving circuit and a dirt speedway can also be hired
- There are bathroom facilities
- There is a classroom and commercial kitchen



- The venue management is seeking funding to develop a motorsport precinct with a dragstrip and motorsport circuit